

Alaska Department of Fish and Game

Habitat Section
Southeast Region



191-20-13800-2011-3022

ADDITION

Water body name:

Survey date: 7/22/2024

Quad: Icy Bay D2, D3

Species & Lifestage: CO

Upper Reach Latitude: 59.967072 **Longitude:** -141.683716

Survey crew: NJ, CD, DK

Lower Reach Latitude: 59.966541 **Longitude:** -141.681914

Findings: We surveyed this cataloged stream using a backpack electrofisher and GPS and captured juvenile coho salmon. This is a narrow stream that starts out in a forested buffer, but the buffer becomes clearcut around it near waypoint 685; some trees are cut right next to the water. Water goes subsurface intermittently in the clearcut area and reappears nearby. Clearcut is likely impacting the stream negatively in terms of fish habitat (Table 1; Figures 1–3).

Recommendations: Extend upper extent of Stream No. 191-20-13800-2011-3022 in the anadromous waters catalog up to waypoint 686 (Figure 4).

Nomination: Pending

Table 1.–191-20-138-2011-3022 survey data.

Waypoint	Latitude	Longitude	Notes	Stream Width ft	Stream Substrate	Habitat Features	Gradient %	Sample Effort	Sample Results
685	59.966919	-141.683611	Stream is largely stagnant, buffer clearcut. Stream should have received buffer due to 2014 survey.	2-4	Fine Organic		0-1	EF	
686	59.967013	-141.683738	More defined channel with flow. Area is clearcut upstream for 150 ft, minus a few trees. Fish caught 50 ft downstream in buffer. Channel seeps out of ground at this point.	2-4	Fine Organic		0-1	EF	2 CO
687	59.966818	-141.683821	Channel is stagnant. All trees cut.	2-4	Fine Organic		0-1	EF	
688	59.967027	-141.684476	Channel reappears and is spread out in wetland. No buffer left.	4-6	Fine Organic		0-1	EF	
689	59.966839	-141.685061	Stream seeps out of ground.	2-4				EF	No Fish



Figure 1.—Juvenile coho salmon caught at waypoint 686.



Figure 2.—Stream channel in clear cut at waypoint 686.



Figure 3.—Stream channel in clear cut at waypoint 688.

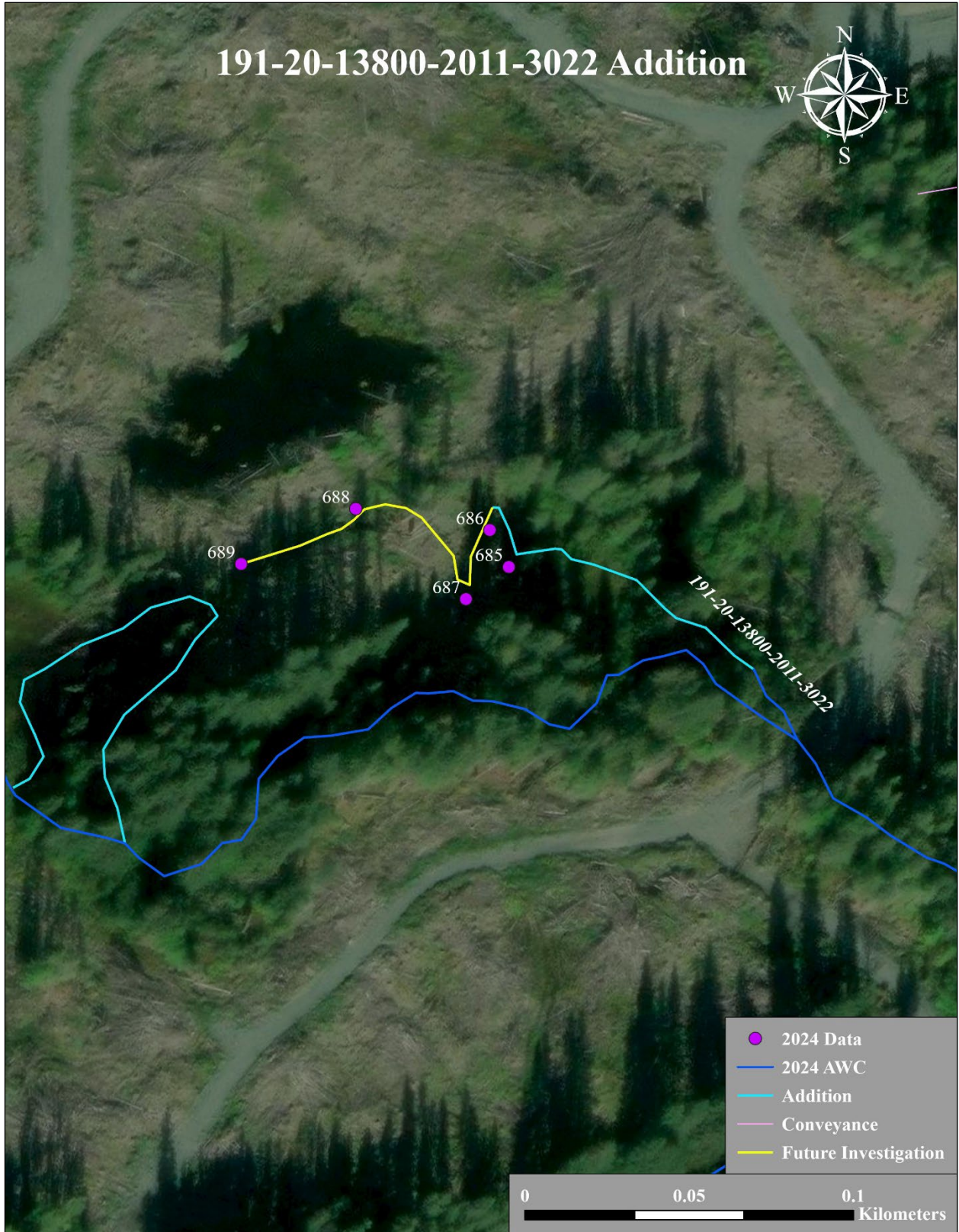


Figure 4.—191-20-13800-2011-3022 addition map.